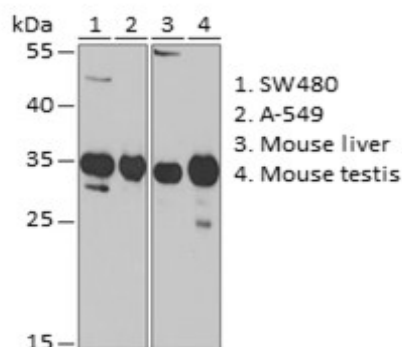
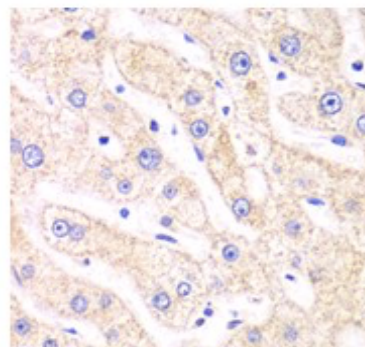


Product Name: PI31 Rabbit pAb
Catalog #: Y2602-20; Y2602-100
Also Known As: PSMF1; PI31
Quantity: 20 µl for Y2602-20; 100 µl for Y2602-100
Concentration: See labels on tube
Host Species: Rabbit
Isotype: IgG
Reactivity: Human, Mouse, Rat
Immunogen: Recombinant fusion protein containing a sequence corresponding to amino acids 1-271 of human PI31.
Swiss Prot. #: Q92530
Calculated MW: 29 kDa
Detected MW: 35 kDa
Applications: WB (1:500 - 1:2,000)
 IHC (1:50 - 1:100)
 IP (not tested)
 IF (not tested)
 Note: Antibody dilution should be optimized by users.

Images:



Immunoblotting 25 µg whole cell extracts of various cell lines using PI31 antibody (Y2602) at 1:1,000 dilution.



Immunohistochemistry of paraffin-embedded human liver tissue using PI31 antibody (Y2602) at 1:100 dilution.

Purification: Protein A or G affinity purification
Buffer: PBS with 0.02% sodium azide, 50% glycerol, pH7.3
Storage: Store at -20°C. Centrifuge to maximize product recovery.
Background: PI31 is a 20S proteasome associating protein. It can inhibit proteasome activity and function as an adaptor to distribute proteasomes in neurons.
Reference: 1. McCutchen - Maloney SL, et al. (2000) J Biol Chem 275, 18557 - 18565.
 2. Liu k, et al. (2019) Dev Cell 50, 509 - 524. e10.
Note: This product is for research use only.