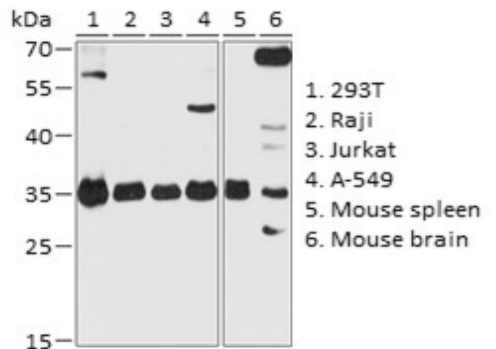
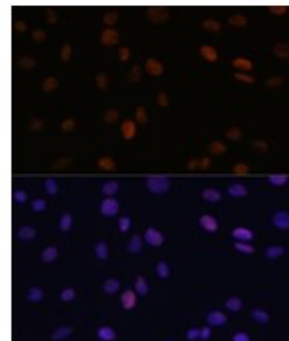


Product Name: PA28gamma Rabbit pAb
Catalog #: Y2522-20; Y2522-100
Also Known As: PSME3; HEL-S-283; Ki; PA28-gamma; PA28G; PA28gamma; REG-GAMMA
Quantity: 20 µl for Y2522-20; 100 µl for Y2522-100
Concentration: See labels on tube
Host Species: Rabbit
Isotype: IgG
Reactivity: Human, Mouse, Rat
Immunogen: A synthetic peptide corresponding to a sequence within amino acids 100 to the C-terminus of human PA28gamma.
Swiss Prot. #: P61289
Calculated MW: 30 kDa
Detected MW: 35 kDa
Applications: WB (1:500 - 1:2,000)
 IHC (1:50 - 1:200)
 IF (1:50 - 1:200)
 IP (not tested)
 Note: Antibody dilution should be optimized by users.

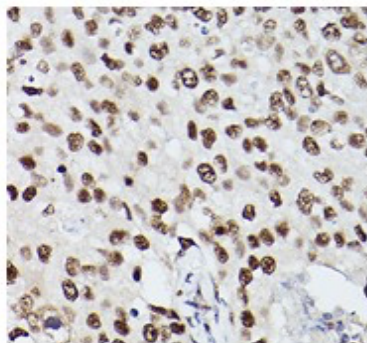
Images:



Immunoblotting 25 µg whole cell extracts of various cell lines using PA28gamma antibody (Y2522) at 1:1,000 dilution.



Immunofluorescence of C6 cells using PA28gamma antibody (Y2522) at 1:100 dilution. Blue: DAPI nuclear staining.



Immunohistochemistry of paraffin-embedded human breast cancer using PA28gamma antibody (Y2522) at 1:100 dilution.

- Purification:** Protein A or G affinity purification
- Buffer:** PBS with 0.02% sodium azide, 50% glycerol, pH7.3
- Storage:** Store at -20°C. Centrifuge to maximize product recovery.
- Background:** PA28gamma is one of the three members in this proteasome activator family, the others are PA28alpha and PA28beta. PA28gamma exists in the form of a homoheptamer and is mainly located in the nucleus. The PA28gamma complex binds the α ring of the 20S proteasome that promotes degradation of certain nuclear proteins.
- Reference:**
1. Nikaido T, et al. (1990) Clin Exp Immun 79, 209 - 214.
 2. Rechsteiner M and Hill CP, (2005) Trends Cell Biol 15, 27 - 33.
- Note:** This product is for research use only.

