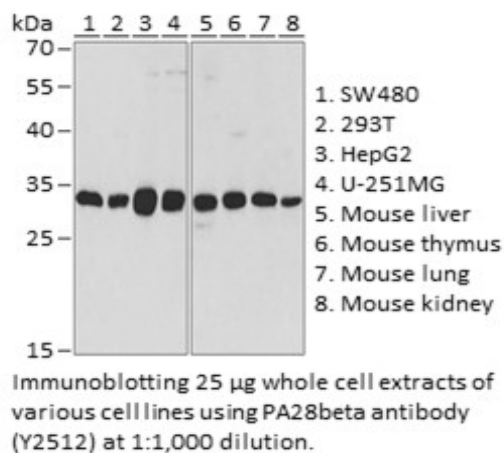


<b>Product Name:</b>	PA28beta Rabbit pAb
<b>Catalog #:</b>	Y2512-20; Y2512-100
<b>Also Known As:</b>	PSME2; PA28B; PA28beta; REGbeta
<b>Quantity:</b>	20 µl for Y2512-20; 100 µl for Y2512-100
<b>Concentration:</b>	See labels on tube
<b>Host Species:</b>	Rabbit
<b>Isotype:</b>	IgG
<b>Reactivity:</b>	Human, Mouse
<b>Immunogen:</b>	Recombinant fusion protein containing a sequence corresponding to amino acids 1-239 of human PA28beta.
<b>Swiss Prot. #:</b>	Q9UL46
<b>Calculated MW:</b>	27 kDa
<b>Detected MW:</b>	27 kDa
<b>Applications:</b>	WB (1:500 - 1:2,000) IP (not tested) IHC (not tested) IF (not tested) Note: Antibody dilution should be optimized by users.

**Images:**



<b>Purification:</b>	Protein A or G affinity purification
<b>Buffer:</b>	PBS with 0.02% sodium azide, 50% glycerol, pH7.3
<b>Storage:</b>	Store at -20°C. Centrifuge to maximize product recovery.
<b>Background:</b>	PA28beta is one of the three members in this proteasome activator family, the others are PA28beta and PA28gamma. PA28alpha and PA28beta form a heteroheptameric complex that binds the $\alpha$ rings of the 20S complex to form a special form of proteasome. The PA28alpha/beta activated proteasome participates in MHC class I antigen presentation by promoting the generation of antigenic peptides from foreign proteins.
<b>Reference:</b>	1. Ahn JY, et al. (1995) FEBS Lett. 366, 37 - 42. 2. McCusker D, et al. (1999) Immunogenetics 49, 438 - 445.
<b>Note:</b>	This product is for research use only.