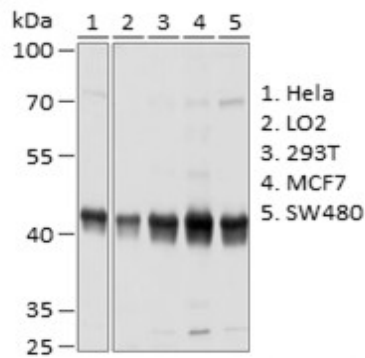
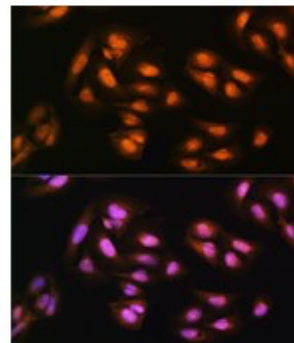


Product Name: Adrm1 Rabbit pAb
Catalog #: Y2422-20; Y2422-100
Also Known As: ADRM1; ARM-1; ARM1; GP110
Quantity: 20 µl for Y2422-20; 100 µl for Y2422-100
Concentration: See labels on tube
Host Species: Rabbit
Isotype: IgG
Reactivity: Human, Mouse, Rat
Immunogen: Recombinant fusion protein containing a sequence corresponding to amino acids 108-407 of human Adrm1.
Swiss Prot. #: Q16186
Calculated MW: 42 kDa
Detected MW: 42 kDa
Applications: WB (1:500 - 1:4,000)
IHC (1:50 - 1:200)
IF (1:50 - 1:200)
IP (not tested)
Note: Antibody dilution should be optimized by users.

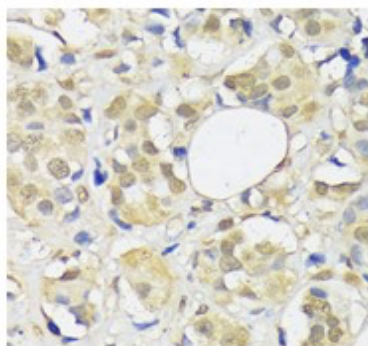
Images:



Immunoblotting 25 µg whole cell extracts of various cell lines using Adrm1 antibody (Y2422) at 1:1,000 dilution.



Immunofluorescence of U2OS cells using Adrm1 antibody (Y2422) at 1:100 dilution. Blue: DAPI nuclear staining.



Immunohistochemistry of paraffin-embedded human breast cancer using Adrm1 antibody (Y2422) at 1:100 dilution.

- Purification:** Protein A or G affinity purification
- Buffer:** PBS with 0.02% sodium azide, 50% glycerol, pH7.3
- Storage:** Store at -20°C. Centrifuge to maximize product recovery.
- Background:** Adrm1 is one of the ubiquitin receptors on the 26S proteasome that recruit polyubiquitinated proteins. The 26S proteasome is composed of 33 different proteins and responsible for degrading polyubiquitinated proteins in a ATP hydrolysis-dependent manner. The 19S regulatory particle can bind polyubiquitin chains to recruit substrates, deubiquitinate to recycle ubiquitin, unfold substrate proteins under ATP hydrolysis, and translocate unfolded proteins to the 20S proteasome for hydrolysis.
- Reference:**
1. Schreiner P, et al. (2008) Nature 453, 548 - 552.
 2. Husnjak K, et al. (2008) Nature 453, 481 - 488.
- Note:** This product is for research use only.

