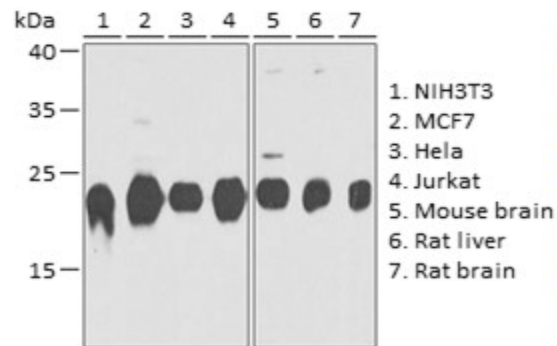
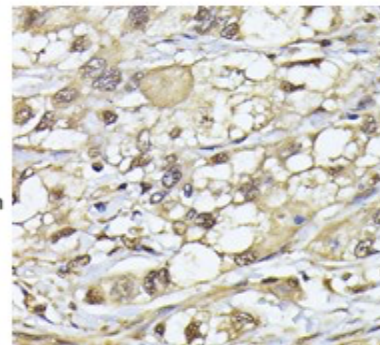


Product Name: PSMB3 Rabbit pAb
Catalog #: Y2142-20; Y2142-100
Also Known As: PSMB3; HC10-II
Quantity: 20 µl for Y2142-20; 100 µl for Y2142-100
Concentration: See labels on tube
Host Species: Rabbit
Isotype: IgG
Reactivity: Human, Mouse, Rat
Immunogen: Recombinant fusion protein containing a sequence corresponding to amino acids 1-205 of human proteasome subunit beta 3 (PSMB3).
Swiss Prot. #: P49720
Calculated MW: 22 kDa
Detected MW: 22 kDa
Applications: WB (1:500 - 1:2,000)
 IHC (1:50 - 1:200)
 IP (not tested)
 IF (not tested)
 Note: Antibody dilution should be optimized by users.

Images:



Immunoblotting 25 µg whole cell extracts of various cell lines using PSMB3 antibody (Y2142) at 1:1,000 dilution.



Immunohistochemistry of paraffin-embedded rat lung using PSMB3 antibody (Y2142) at 1:100 dilution.

Purification: Protein A or G affinity purification
Buffer: PBS with 0.02% sodium azide, 50% glycerol, pH7.3
Storage: Store at -20°C. Centrifuge to maximize product recovery.
Background: Proteasome subunit beta 3 is one of the seven beta subunits of the 20S proteasome. The 20S proteasome has a barrel-like structure containing four stacked $\alpha\beta\alpha$ rings. Each α or β ring is composed of seven different proteins. $\beta 1$, $\beta 2$ and $\beta 5$ have peptidase activities that hydrolyze proteins. The corresponding catalytic subunits in immunoproteasomes are $\beta 1i$, $\beta 2i$ and $\beta 5i$ subunits. The 20S proteasome can assemble with other protein complexes that activate the 20S proteasome to degrade proteins.
Reference: 1. McCusker D, et al. (1997) Genomics 45, 362 - 367.
 2. Tomko RJ and Hochstrasser M, (2013) Annu Rev Biochem 82, 415 - 445.
Note: This product is for research use only.

