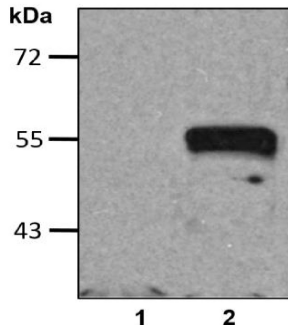


Anti-Myc

Cat. # Y1090, Y1091

Also Known as:	Anti-Myc (MYC.A7) Mouse Monoclonal Antibody
Isotype:	Mouse IgG1
Clone	MYC.A7
MW:	~55/25 kDa
Species:	N/A
Immunogen:	EQKLISEEDL (Myc) synthetic peptide conjugated to KLH
Concentration:	1 µg/µl
Stock Buffer:	10 mM PBS (pH 7.2), 10% Glycerol, 0.09% NaN ₃ (sodium azide)
Specificity:	Recognizes the N-terminal or C-terminal Myc-tagged fusion proteins
Purification:	Protein A affinity chromatography from mouse ascites fluid
Applications:	Dot, ELISA, IP, IS, WB
Quality Assurance:	Guaranteed for detecting 10-50 ng of Myc-tagged fusion proteins
Working Conditions:	WB (with ECL): 1:1000-3000 dilution IS: 1:500-2000 dilution For best results with other assays (e.g.: Dot, ELISA, IP, etc), please determine optimal working dilution by titration test

Image:



1:1000 (1µg/mL) Ab dilution probed against HEK293 cells transfected with Myc-tagged protein vector; untransfected (lane 1) and transfected (lane 2)

Storage:	Store at -20°C. Centrifuge after first thaw to maximize product recovery. Aliquot to avoid repeated freeze-thaw cycles.
Note:	N/A





UBPBio
12635 E. Montview Blvd. Ste 100
Aurora, CO 80045, USA
Fax: 1-800-682-6801
Email: info@ubpbio.com
www.ubpbio.com

