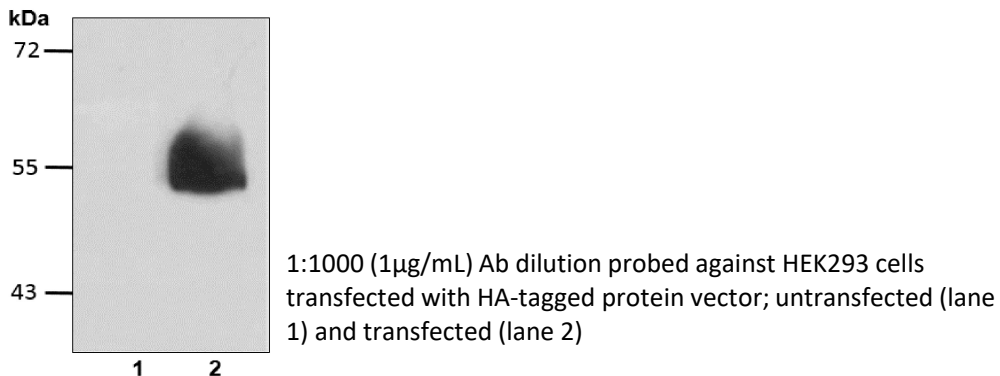


Anti-HA

Cat. # Y1070, Y1071

Also Known as:	Anti-HA (HA.C5) Mouse Monoclonal Antibody
Isotype:	Mouse IgG3
Clone	HA.C5
MW:	~55/25 kDa
Species:	N/A
Immunogen:	YPYDVPDYA (HA) synthetic peptide conjugated to KLH
Concentration:	1 µg/µl
Stock Buffer:	10 mM PBS (pH 7.2), 10% Glycerol, 0.09% NaN ₃ (sodium azide)
Specificity:	Recognizes the N-terminal, C-terminal or internal HA- tagged fusion proteins
Purification:	Protein A affinity chromatography from mouse ascites fluid
Applications:	Dot, ELISA, IP, IS, WB
Quality Assurance:	Guaranteed for detecting 1-5 ng of HA-tagged fusion proteins
Working Conditions:	WB (with ECL): 1:1000-3000 dilution (incubate for 1 hour at room temperature) IS: 1:500-2000 dilution For best results with other assays (e.g.: Dot, ELISA, IP, etc), please determine optimal working dilution by titration test

Image:



Storage:	Store at -20°C. Centrifuge after first thaw to maximize product recovery. Aliquot to avoid repeated freeze-thaw cycles.
Note:	N/A