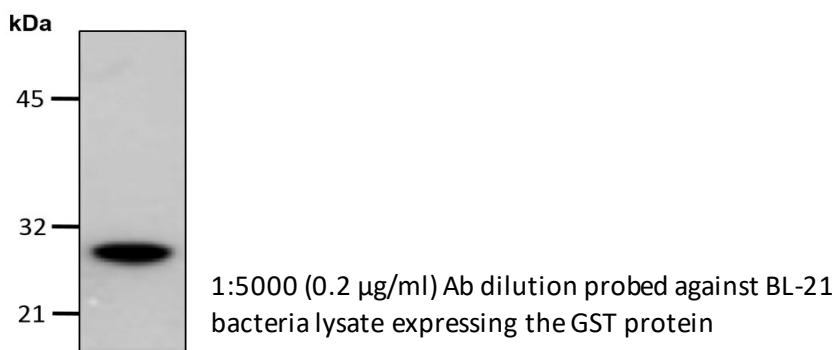


# Anti-GST

Cat. # Y1020, Y1021

<b>Also Known as:</b>	Anti-GST (GST.B6) Mouse Monoclonal Antibody
<b>Isotype:</b>	Mouse IgG2a
<b>Clone</b>	GST.B6
<b>MW:</b>	~55/25 kDa
<b>Species:</b>	N/A
<b>Immunogen:</b>	GST protein
<b>Concentration:</b>	1 µg/µl
<b>Stock Buffer:</b>	10 mM PBS (pH 7.2), 10% Glycerol, 0.09% NaN <sub>3</sub> (sodium azide)
<b>Specificity:</b>	Recognizes native and denatured forms of purified GST or GST fusion proteins
<b>Purification:</b>	Protein A affinity chromatography from mouse ascites fluid
<b>Applications:</b>	Dot, ELISA, IP, IS, WB
<b>Quality Assurance:</b>	WB (with ECL): 10-50 ng of purified GST or GST fusion proteins
<b>Working Conditions:</b>	WB (with ECL) 1:1000-3000 dilution IS: 1:500-2000 dilution For best results with other assays (e.g.: Dot, ELISA, IP, etc), please determine optimal working dilution by titration test

## Image:



<b>Storage:</b>	Store at -20°C. Centrifuge after first thaw to maximize product recovery. Aliquot to avoid repeated freeze-thaw cycles.
<b>Note:</b>	N/A