

Anti-6xHis

Cat. # Y1010, Y1011

Also Known as:	Anti-His (HIS.H8) Mouse Monoclonal Antibody
Isotype:	Mouse IgG2b
Clone	HIS.H8
MW:	~55/25 kDa
Species:	N/A
Immunogen:	HHHHHH (6x His) synthetic peptide conjugated to KLH
Concentration:	1 µg/µl
Stock Buffer:	10 mM PBS (pH 7.2), 10% Glycerol, 0.09% NaN ₃ (sodium azide)
Specificity:	Recognizes the epitope of 6xHis-tags encoded by many commercially available vectors, regardless of the tag's location in the fusion protein sequences (i.e.: reacts with N-terminal, C terminal or internal 6xHis-tags)
Purification:	Protein A affinity chromatography from mouse ascites fluid
Applications:	Dot, ELISA, IP, IS, WB
Quality Assurance:	WB (with ECL): 1-2 ng of His-tagged fusion proteins
Working Conditions:	WB (with ECL): 1:1000-3000 dilution IS: 1:500-2000 dilution For best results with other assays (e.g.: Dot, ELISA, IP, etc), please determine optimal working dilution by titration test

Image:

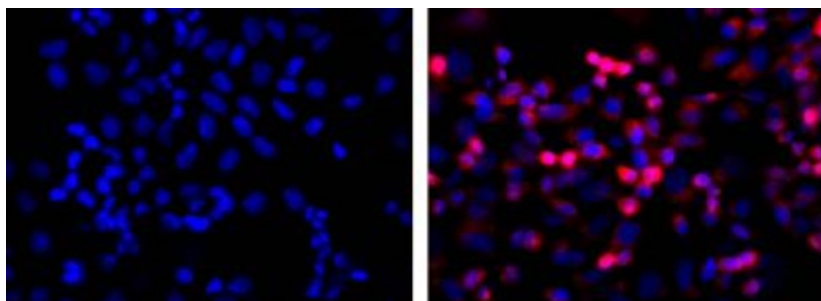


Figure 1. Left: untransfected control; Right: anti-His (in red) on His-tagged fusion proteins in HEK293 cells. Both counterstained with DAPI (in blue)

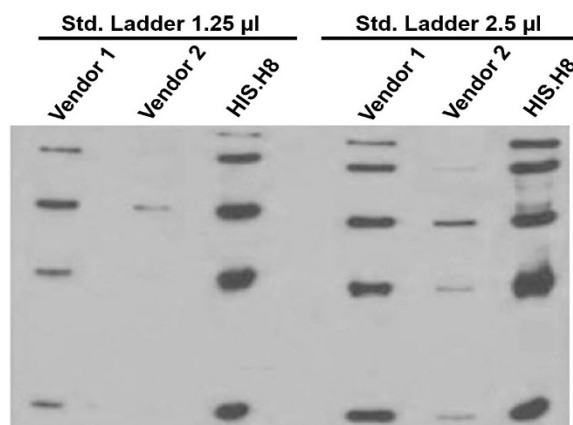


Figure 2. Comparison between anti-His tag (HIS.H8) mAb with two different vendor Abs, probed against a standard ladder (QIAGEN Cat. No. 34705) containing five different His-tagged proteins. All Ab dilutions are 1:2000 (0.5 µg/ml)

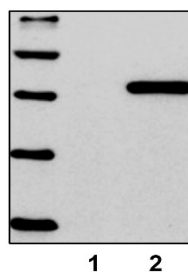


Figure 3. Standard ladder containing five different His-tagged proteins; untransfected control (Lane 1), HEK293 cells transfected with His-tagged protein vector (Lane 2)

Storage:

Store at -20°C. Centrifuge after first thaw to maximize product recovery. Aliquot to avoid repeated freeze-thaw cycles.

Note:

N/A