

1 Kb DNA Ladder

Cat. # L1020, L1021

Introduction: A unique combination of a number of proprietary plasmids digested with appropriate restriction enzymes and PCR products to yield 13 fragments, suitable for use as molecular weight standards for agarose gel electrophoresis. The DNA includes fragments ranging from 250-10,000 base pairs. The 1K and 3K bands have increased intensity to serve as reference points. The approximate amount of DNA in each band is provided (0.5 µg per load).

Size: 500 µl (Cat.# L1020), 6X500 µl (Cat.# L1021)

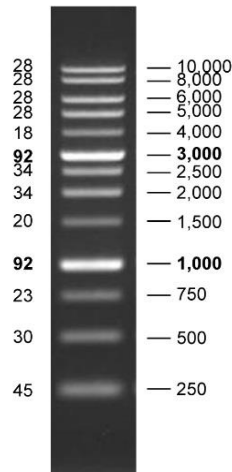
Range: 250 bp to 10,000 bp

Number of bands: 13

Concentration: 100 µg/ml

Recommended Load: 5 µl / well, Containing orange G & xylene cyanol FF as tracking dyes.

Image: DNA Mass (ng/5µl) Base Pairs



1 % TAE agarose gel

Stability: Store at 25°C for 6 months
Store at 4°C for 12months
For long term storage, store at -20°C (Recommended)

