

# 100 bp DNA Ladder

Cat. # L1010, L1011

**Introduction:** A unique combination of PCR products and a number of proprietary plasmids digested with appropriate restriction enzymes to yield 12 fragments, suitable for use as molecular weight standards for agarose gel electrophoresis. The DNA includes fragments ranging from 100-3,000 base pairs. The 500 and 1,500 base pair bands have increased intensity to serve as reference points. The approximate amount of DNA in each band is provided (0.54 µg per load).

**Size:** 500 µl (Cat.# L1010), 6X500 µl (Cat.# L1011)

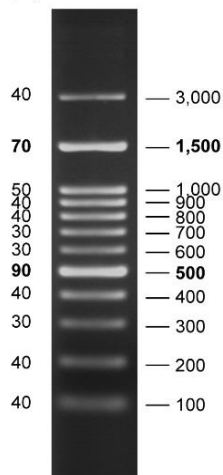
**Range:** 100 bp to 3,000 bp

**Number of bands:** 12

**Concentration:** 108 µg/ml

**Recommended Load:** 5 µl / well, Containing orange G & xylene cyanol FF as tracking dyes.

**Image:** DNA Mass (ng/5µl)      Base Pairs



1.5 % TAE agarose gel

**Stability:** Store at 25°C for 6 months  
Store at 4°C for 12months  
For long term storage, store at -20°C (Recommended)

