

Loading Control Antibody Kit

(Cat. # J5200)

Description

Loading Control Antibody Kit contains three commonly-used loading control antibodies. The anti-GAPDH, beta-actin and beta-tubulin antibodies in this kit are mouse monoclonal antibodies purified by protein A affinity chromatography from mouse ascites fluids. You save approximately 30% compared to buy individually.

Components

Antibody Name	Clone	Quantity
Anti-GAPDH	GA1R	100 µg
Anti-beta-Actin	BA3R	100 µg
Anti-beta-Tubulin	BT7R	100 µg

Applications

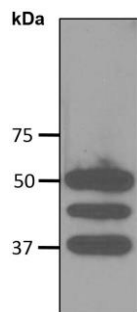
Dot, ELISA, IS, WB

Working Condition

For Western Blot with ECL, Anti-GAPDH 1:1000-10,000 dilution; Anti-beta-Actin 1:1000-5,000 dilution; Anti-beta-Tubulin 1:1000-5,000 dilution.

For best results with other assays (e.g.: Dot, ELISA, IS, etc), please determine optimal working dilution by titration test

Image



Three loading control mAbs reacting against 10 µg/lane of mouse brain tissue lysates. 50 kDa band is Anti-β-Tubulin (BT7R) at 1:2000 dilution (0.5 µg/ml); 42 kDa band is Anti-β-Actin (BA3R) at 1:1000 dilution (1 µg/ml); 37 kDa band is Anti-GAPDH (GA1R) at 1:5000 dilution (0.2 µg/ml)

Stock Buffer

10 mM PBS (pH 7.2), 10% Glycerol, 0.09% NaN₃ (sodium azide)

