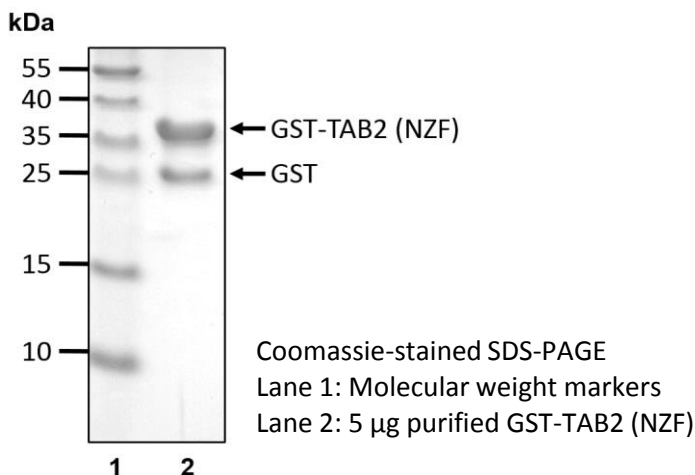


GST-TAB2 (NZF)

Cat. # I1720, I1721

Also Known as: CHTD2; MAP3K7IP2
NCBI Reference: NM_015093.4
MW (no tag): 7.7 kDa
Species: Human
Source: Bacterial recombinant
Tag: GST
Stock Buffer: 20 mM Tris, 150 mM NaCl, 2 mM β ME, 10% Glycerol
Concentration: See tube label
Quality Assurance: ~80% by SDS-PAGE

Image



Description: GST was fused on the N-terminus of the lysine 63 polyubiquitin chain binding domain of TAB2 encompassing amino acids 627-693. This fusion protein can be used for in vitro GST pulldown assays and for enrichment of cellular proteins conjugated with lysine 63 polyubiquitin chains in whole cell or tissue lysates. GST-TAB2 (NZF) can be precipitated using glutathione resin. After washing, GST-TAB2 (NZF) and its bound proteins can be eluted by a buffer containing 10 mM glutathione.

Storage: Store at -80°C; avoid multiple freeze-thaw cycles

Note: Dissolve 10 mM glutathione in a neutral buffer could drop pH to 3 - 4. Use 0.2 M NaOH to adjust pH back to neutral.

Literature:
1. van Wijk SJ, *et al.* (2013) Nat Protoc. 8(7):1449-58
2. van Wijk SJ, *et al.* (2012) Mol Cell. 14;47(5):797-809