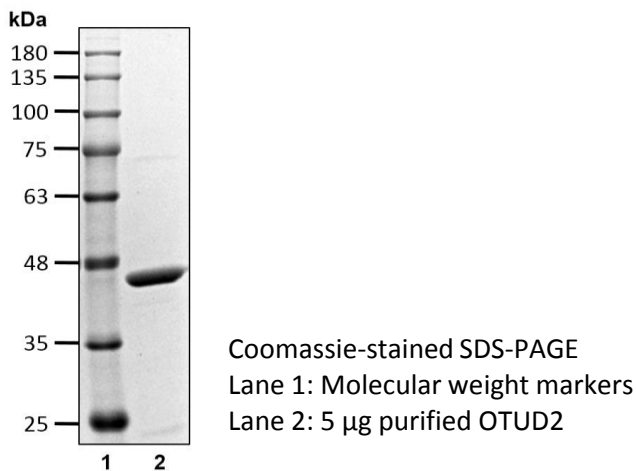


OTUD2

Cat. # H3400

Also Known as: DUBA8; YOD1; PRO0907
NCBI Reference: NM_018566.3
MW (no tag): 38.3 kDa
Species: Human
Source: Bacterial recombinant
Tag: No
Stock Buffer: 20 mM Tris, 150 mM NaCl, 2 mM β ME, 10% Glycerol
Concentration: See tube label
Quality Assurance: ~90% by SDS-PAGE

Image



Description: OTUD2 belongs to the OTU (ovarian tumour) family of deubiquitinating enzymes. OTUD2 cleaves K-11, 27, 29 or 33-linked polyubiquitin chains. It could be involved in regulating endoplasmic reticulum-associated degradation (ERAD) of misfolded luminal proteins.

Storage: Store at -80°C; avoid multiple freeze-thaw cycles

Note: N/A

Literature:

- Ernst R, *et al.* (2009) Mol. Cell 36:28-38
- Mevisen TE, *et al.* (2013) Cell 154:169-184