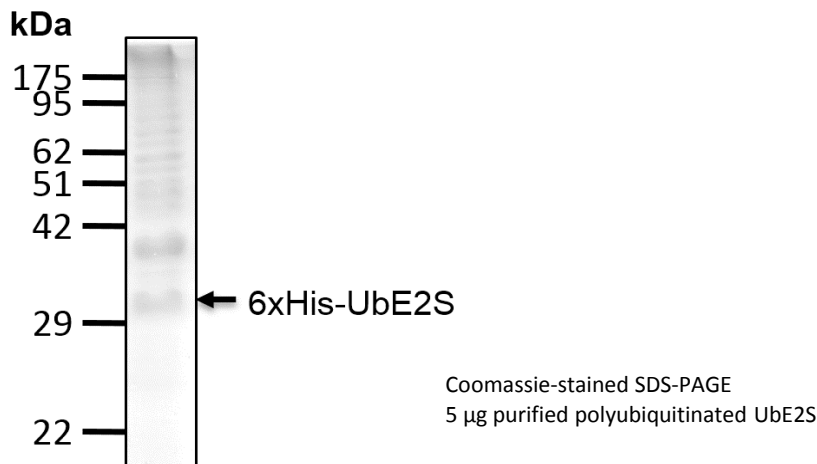


# Polyubiquitinated UbE2S

Cat. # G7010

**Also Known as:** Ubn (K11-linked)-UbE2S  
**NCBI Reference:** N/A  
**MW (no tag):** N/A  
**Species:** Human  
**Source:** Bacterial recombinant  
**Tag:** No  
**Stock Buffer:** 20 mM Tris, 150 mM NaCl, 2 mM  $\beta$ ME, 10% Glycerol  
**Concentration:** See tube label  
**Quality Assurance:** >90% by SDS-PAGE

**Image:**



**Description:** Polyubiquitinated UbE2S (Ubn (K11-linked)-UbE2S) is a polyubiquitinated substrate in which various K11-linked polyUb chains were conjugated on the Ub conjugating enzyme UbE2S. It can be used as a substrate to monitor deubiquitination mediated by deubiquitinating enzymes, or to determine binding of K11-linked polyUb chains by proteins that have Ub interacting domains.

**Storage:** Store at -80°C; avoid multiple freeze-thaw cycles

