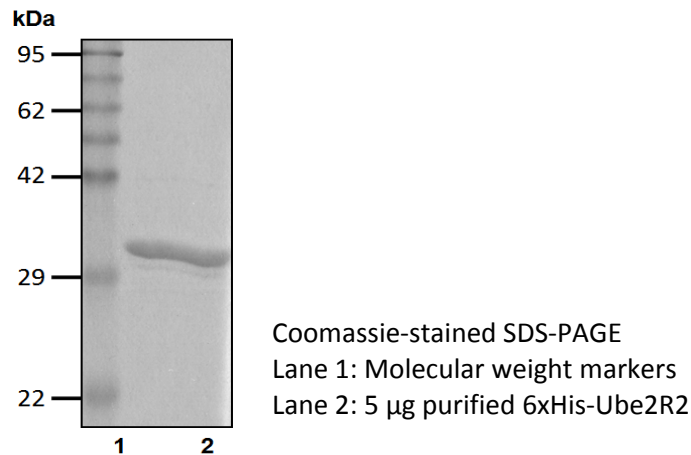


# 6xHis-Ube2R2

Cat. # C3600, C3601

**Also Known as:** UBC3B; CDC34B; E2-CDC34B; FLJ20419; MGC10481  
**NCBI Reference:** NM\_017811  
**MW (no tag):** 27.2 kDa  
**Species:** Human  
**Source:** Bacterial recombinant  
**Tag:** 6xHis  
**Stock Buffer:** 20 mM Tris, 150 mM NaCl, 2 mM  $\beta$ ME, 10% Glycerol  
**Concentration:** See tube label  
**Quality Assurance:** ~90% by SDS-PAGE

## Image



**Description:** Ube2R2 is an E2 enzyme, which is part of the E1, E2, and E3 cascade responsible for ubiquitination of protein substrates. Ube2R2 is phosphorylated by CK2 before it can bind to SCF (Skp1, Cul1, F-box) subunit  $\beta$ -TrCP. This E2 catalyzes K48 – linked Ub chains, which when conjugated to substrates, are targeted to the 26S proteasome for degradation.

**Storage:** Store at -80°C; avoid multiple freeze-thaw cycles

**Note:** N/A

**Literature:**

1. Semplici F, *et al.* (2002) *Oncogene* 21, 3978 – 3987.
2. Jin J, *et al.* (2007) *Nature* 447(7148), 1135 – 1138.
3. David Y, *et al.* (2010) *J Biol Chem* 285(12), 8595 – 8604.

