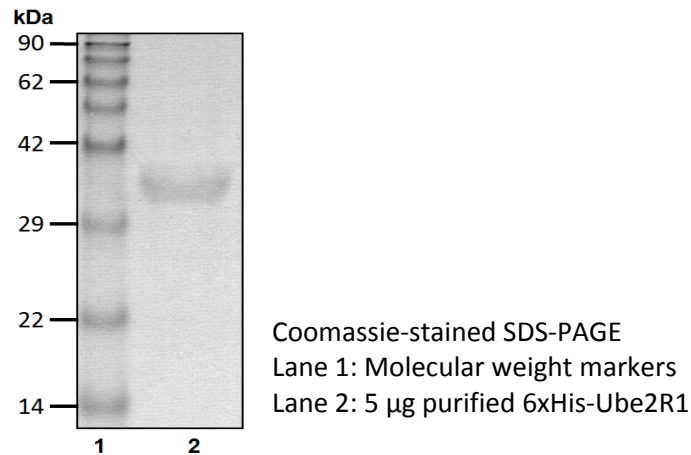


6xHis-Ube2R1 (Cdc34)

Cat. # C3500, C3501

Also Known as: UBC3; UBCH3; UBE2R1; E2-CDC34
NCBI Reference: NM_004359
MW (no tag): 26.7 kDa
Species: Human
Source: Bacterial recombinant
Tag: 6xHis
Stock Buffer: 20 mM Tris, 150 mM NaCl, 2 mM β ME, 10% Glycerol
Concentration: See tube label
Quality Assurance: ~90% by SDS-PAGE

Image



Description:

Ube2R1 (UbcH3) is an E2 enzyme, which is part of the E1, E2, and E3 cascade responsible for ubiquitination of protein substrates. Ube2R1 was first discovered during screening for cell cycle regulatory mutations that occur in yeast. While Ube2R1 is able to create diubiquitin chains by itself, it works far more efficiently and effectively with the E3 ligase Skp1 (S-phase kinase-associated protein 1)/cullin/F-box, also known as SCF, to promote substrate polyubiquitination.

Storage:

Store at -80°C; avoid multiple freeze-thaw cycles

Note:

N/A

Literature:

1. Plon SE, *et al.* (1993) Proc Natl Acad Sci USA 90(22), 10484 – 10488.
2. Gazdoui S, *et al.* (2005) Proc Natl Acad Sci USA 102(42), 15053 – 15058.
3. Sadowski M, *et al.* (2007) Biochem J 405, 569 – 581.
4. Butz N, *et al.* (2005) Exp Cell Res 303(2), 482 – 493.

