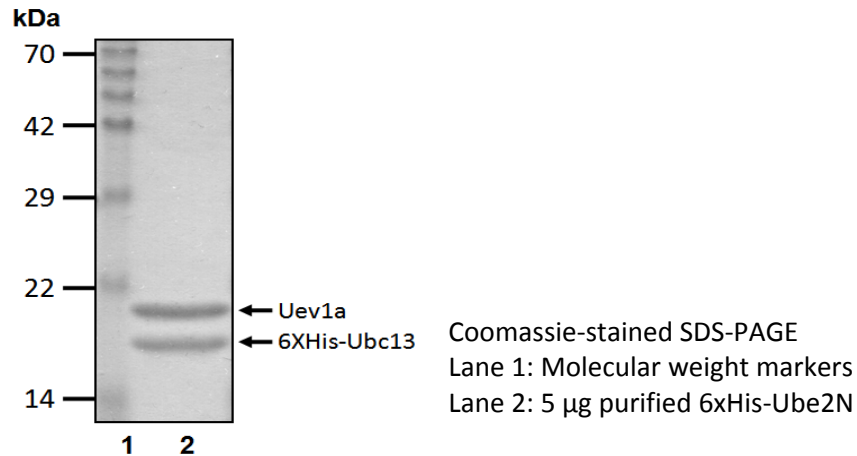


6xHis-Ube2N (6xHis-Ubc13/Uev1a)

Cat. # C3200, C3201

Also Known as: Ubc13 (UbcH-ben; MGC8489; MGC131857); Uev1a (Ube2V1; CIR1; UEV1; CROC1; UBE2V; UEV-1; CROC-1)
NCBI Reference: NM_003348 (Ubc13); NM_021988 (Uev1a)
MW (no tag): Ubc13 (17.1 kDa), Uev1a (19.3 kDa)
Species: Human
Source: Bacterial recombinant
Tag: 6xHis
Stock Buffer: 20 mM Tris, 150 mM NaCl, 2 mM β ME, 10% Glycerol
Concentration: See tube label
Quality Assurance: ~95% by SDS-PAGE

Image



Description: Ube2N (UbcH13/Uev1a) is a complex that acts as an E2 enzyme, which is part of the E1, E2, and E3 cascade responsible for ubiquitination of protein substrates. Uev1a must interact with Ubc13 because it lacks the active site that other E2s possess. Ube2N has been known to catalyze K63 – linked Ub chains which aids in activation of kinases in NF – kappaB signaling pathway, amongst other tasks.

Storage: Store at -80°C; avoid multiple freeze-thaw cycles

Note: N/A

Literature:

1. Yamaguchi T, *et al.* (1996) *J Biochem* 120(3), 494 – 497.
2. Hofmann RM, *et al.* (1999) *Cell* 96(5), 645-653.
3. Ashley C, *et al.* (2002) *Gene* 285(1 – 2), 183 – 191.
4. Andersen PL, *et al.* (2005) *J Cell Biol* 170(5), 745 – 755.

