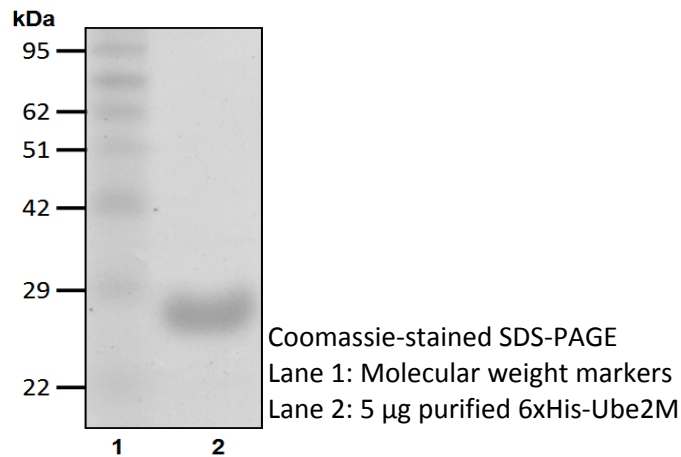


6xHis-Ube2M (UbcH12)

Cat. # C3100, C3101

Also Known as: UBC12; hUbc12; UBC-RS2
NCBI Reference: NM_003969
MW (no tag): 20.9 kDa
Species: Human
Source: Bacterial recombinant
Tag: 6xHis
Stock Buffer: 20 mM Tris, 150 mM NaCl, 2 mM β ME, 10% Glycerol
Concentration: See tube label
Quality Assurance: ~95% by SDS-PAGE

Image



Description: Ube2M is an E2 enzyme, which is part of the E1, E2, and E3 cascade responsible for conjugation of the Ub-like protein NEDD8 to protein substrates. This E2 is unique from Ube2F in the fact that it does not need to complex with an E3 in order to conjugate the NEDD8 to a Cullin Ring Ligase (CRL), which is a subclass of Ub E3s. The major CRL for Ube2M is cullin-4A.

Storage: Store at -80°C; avoid multiple freeze-thaw cycles

Note: N/A

Literature:

1. Osaka F, *et al.* (1998) *Genes Dev* 12(15), 2263 – 2268.
2. Gong L, *et al.* (1999) *J Biol Chem* 274(17), 12036 – 12042.
3. Huang DT, *et al.* (2009) *Mol Cell* 33, 483–495.
4. Huang AM, *et al.* (2011) *Biochemical Pharmacology* 82, 35 – 42.

