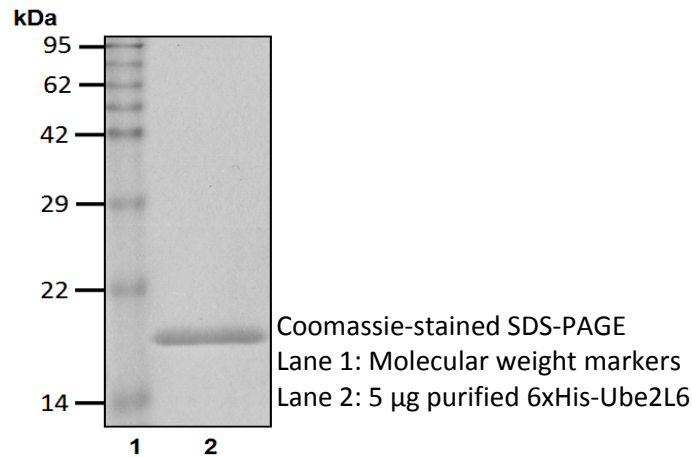


6xHis-Ube2L6

Cat. # C3000, C3001

Also Known as: RIG-B; UBCH8; MGC40331
NCBI Reference: NM_004223
MW (no tag): 17.8 kDa
Species: Human
Source: Bacterial recombinant
Tag: 6xHis
Stock Buffer: 20 mM Tris, 150 mM NaCl, 2 mM β ME, 10% Glycerol
Concentration: See tube label
Quality Assurance: ~95% by SDS-PAGE

Image



Description: Ube2L6 is an E2 enzyme, which is part of the E1, E2, and E3 cascade responsible for ubiquitination of protein substrates. One function of this E2 is that it is involved in ubiquitination and degradation of a neuron – specific protein called syntaxin 1. Recently Ube2L6 has been shown to work with the Isg15 E1, Ube1L, to conjugate Isg15 to substrates as well.

Storage: Store at -80°C; avoid multiple freeze-thaw cycles

Note: N/A

Literature:

1. Kumar S, *et al.* (1997) J Biol Chem 272, 13548-54.
2. Chin LS, *et al.* (2002) J Biol Chem 277, 35071 – 35079.
3. Zhao C, *et al.* (2004) Proc Natl Acad Sci 101(20), 7578 – 7582.
4. Desai SD, *et al.* (2006) Cancer Res 66(2), 921 – 928.
5. Durfee LA, *et al.* (2008) J Biol Chem 283(35), 23895 – 23902.

