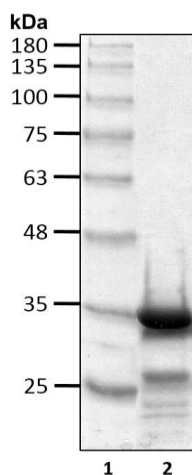


6xHis-Ube2J1 (1-282)

Cat. # C2600, C2601

Also Known as: UBC6; UBC6E; Ubc6p; CGI-76; NCUBE1; HSPC153; HSPC205; NCUBE-1; HSU93243
NCBI Reference: NM_016021.2
MW (no tag): 31.2 kDa
Species: Human
Source: Bacterial recombinant
Tag: 6xHis
Stock Buffer: 20 mM Tris, 150 mM NaCl, 2 mM β ME, 10% Glycerol
Concentration: See tube label
Quality Assurance: ~80% by SDS-PAGE

Image



Coomassie-stained SDS-PAGE
Lane 1: Molecular weight markers
Lane 2: 5 μ g purified 6xHis-Ube2J1

Description: Ube2J1 is an E2 enzyme, which is part of the E1, E2, and E3 cascade responsible for ubiquitination of protein substrates. UBE2J1 is a membrane protein localized on the endoplasmic reticulum (ER), where it catalyzes ubiquitination of misfolded membrane proteins with other ubiquitination components. Ube2J1(1-282) lacks the C-terminal membrane-localization region, but still possesses Ub conjugating activity.

Storage: Store at -80°C ; avoid multiple freeze-thaw cycles

Note: N/A

Literature:

1. Lester D, et al. (2000) *Biochem Biophys Res Commun* 269, 474 – 480.
2. Tiwari S, et al. (2001) *J Biol Chem* 276, 16193 – 16200.
3. Lenk U, et al. (2002) *J Cell Sci* 115(Pt 14), 3007 – 3014.
4. Wang X, et al. (2009) *J Cell Biol* 187(5), 655 – 668.

