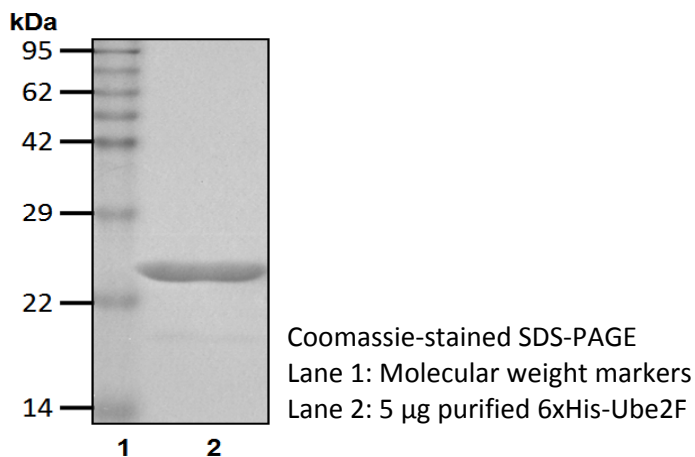


6xHis-Ube2F

Cat. # C2100, C2101

Also Known as: NCE2
NCBI Reference: NM_080678
MW (no tag): 21.1 kDa
Species: Human
Source: Bacterial recombinant
Tag: 6xHis
Stock Buffer: 20 mM Tris, 150 mM NaCl, 2 mM β ME, 10% Glycerol
Concentration: See tube label
Quality Assurance: ~90% by SDS-PAGE

Image



Description:

Ube2F is an E2 enzyme, which is part of the E1, E2, and E3 cascade responsible for conjugation of Nedd8 to protein substrates. Neddylolation is initiated by activating Nedd8 by the Nedd8 activating enzyme APPBP1/UBA3. Cullin is a well-known substrate for Neddylolation. When NEDD8 is covalently bonded to the CRL, it stimulates its E3 Ub ligase activity. A new approach to cancer therapy involves hindering the Nedd8 conjugation pathway through inhibition of the NAE1/UBA3 enzyme.

Storage:

Store at -80°C; avoid multiple freeze-thaw cycles

Note:

N/A

Literature:

1. Duda DM, *et al.* (2008) *Cell* 134(6), 995 – 1006.
2. Huang DT, *et al.* (2009) *Mol Cell* 33, 483–495.
3. Soucy TA, *et al.* (2009) *Nature* 458(7239), 732 – 736.

