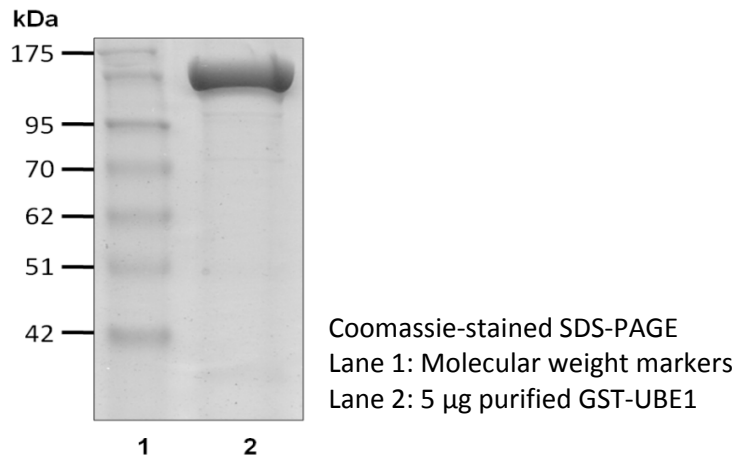


GST-UBE1

Cat. # B1110, B1111

Also Known as: UBA1;A1S9; A1ST; GXP1; UBE1; A1S9T; AMCX1; POC20; SMAX2; UBA1A; UBE1X
NCBI Reference: NM_003334
MW (no tag): 117.8 kDa
Species: Human
Source: Sf21 insect cells
Tag: GST
Stock Buffer: 20 mM Tris, 150 mM NaCl, 2 mM β ME, 10% Glycerol
Concentration: See tube label
Quality Assurance: ~90% by SDS-PAGE

Image



Description: UBE1 is an E1 enzyme within the E1, E2, E3 cascade which conjugates Ub to protein substrates. UBE1 activates Ub by catalyzing an ATP – dependent reaction; Ub is conjugated onto the catalytic Cys residue of UBE1 by formation of a thioester bond. The activated Ub is then passed on to a Ub-conjugating enzyme E2; Ub charged E2 binds a Ub ligase E3 that directly binds substrate proteins. Ub is transferred to the HECT domain E3s prior to being conjugated on substrate proteins. For RING domain E3s, Ub is transferred directly from an E2 to substrate proteins.

Storage: Store at -80°C; avoid multiple freeze-thaw cycles

Note: N/A

Literature:

1. Handley PM, *et al.* (1991) Proc Natl Acad Sci USA 88, 258 – 262.
2. Zheng M, *et al.* (2009) Mol Biol Rep 37, 1413 – 1419.
3. Schulman BA, *et al.* (2009) Nat Rev Mol Biol 10(5), 319 – 331.

